

# Time Is Tight

G7

1a 6 Electric Piano 2

13@Intro:-----

C

13@Part 1:-----

F

9a

-----

C

-----

-----

1@Part 1:-----

C6

-----

F

25a

-----

C

-----

G

33a

13@Part 2:-

-----

G

-----

C

1@Part 4:-

-----

F

C

CMaj7

13@Part 3:-

C CMaj7

C CMaj7 F FMaj7

F FMaj7 C CMaj7

65a

C CMaj7 G

First staff of music. Chords: C, CMaj7, G. Notes: C4, D4, E4, F4, G4, A4, B4, C5 (C major scale). CMaj7 chord (C4, E4, G4, Bb4). G chord (G4, B4, D5).

1@Part 2:-

G G/C G

Second staff of music. Chords: G, G/C, G. Notes: G4, B4, D5 (G major). G/C chord (G4, C5). G chord (G4, B4, D5).

G G/C G C

Third staff of music. Chords: G, G/C, G, C. Notes: G4, B4, D5 (G major). G/C chord (G4, C5). G chord (G4, B4, D5). C chord (C4, E4, G4).

15@Part 4:-

C6

Fourth staff of music. Chord: C6. Notes: C4, E4, G4, Bb4, C5, E5. Chord C6 (C4, E4, G4, Bb4, C5, E5).

81a

F

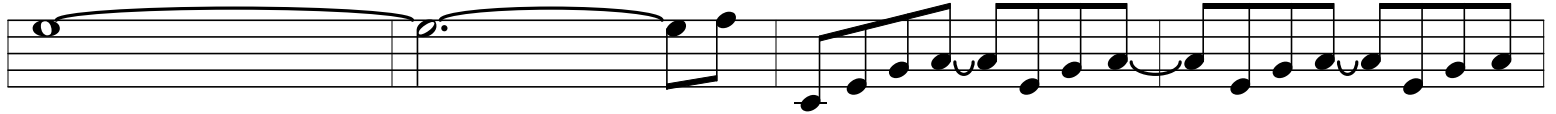
Fifth staff of music. Chord: F. Notes: F4, A4, C5, E5. Chord F (F4, A4, C5, E5).

C

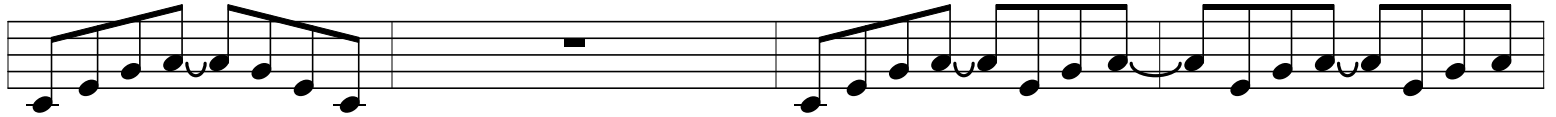
Sixth staff of music. Chord: C. Notes: C4, E4, G4. Chord C (C4, E4, G4).



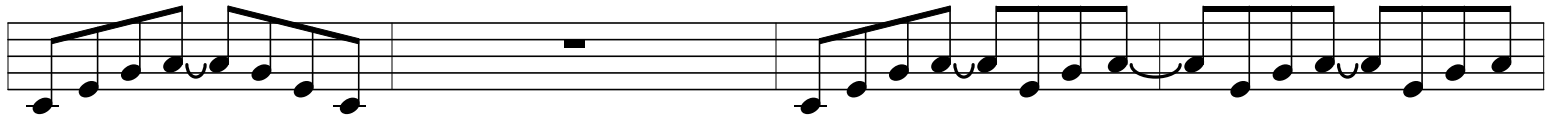
-----



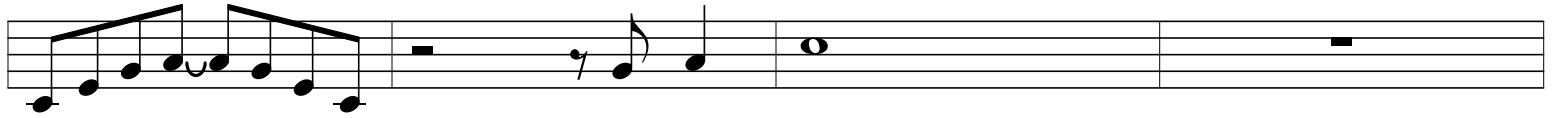
-----



-----



-----



----- 0@-

